



## Creating State View for Audit Collection Services

### Aim:

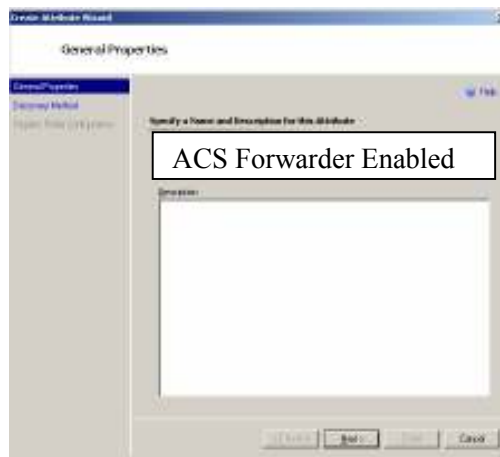
To create 2 state views. One state view to show agents that have ACS enabled and one state view to show agents that have ACS disabled.

### Method:

1. Create an attribute based on the registry setting for the value of the start parameter of the ACS Forwarder Service  
(HKEY\_LOCAL\_MACHINE \ System \ CurrentControlSet \ Services \ AdtAgent\Start)
2. Create a Group for ACS Forwarders Enabled (Start setting = 2 – automatic)
3. Create a Group for ACS Forwarders Disabled (Start setting = 4 – disabled)
4. Create a State View for ACS Forwarders Enabled
5. Create a State View for ACS Forwarders Disabled.

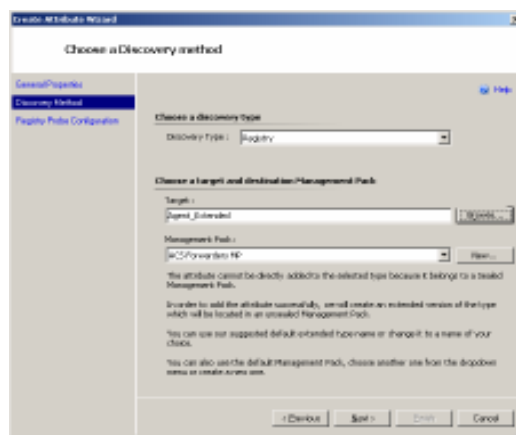
Detail:

1. Create an attribute based on the registry setting for the value of the start parameter of the ACS Forwarder Service (HKEY\_LOCAL\_MACHINE \ System \ CurrentControlSet \ Services \ AdtAgent\Start
  - 1.1 In the authoring pane, right click attributes and choose new attribute. Enter the name of the attribute as ACS Forwarder Enabled.



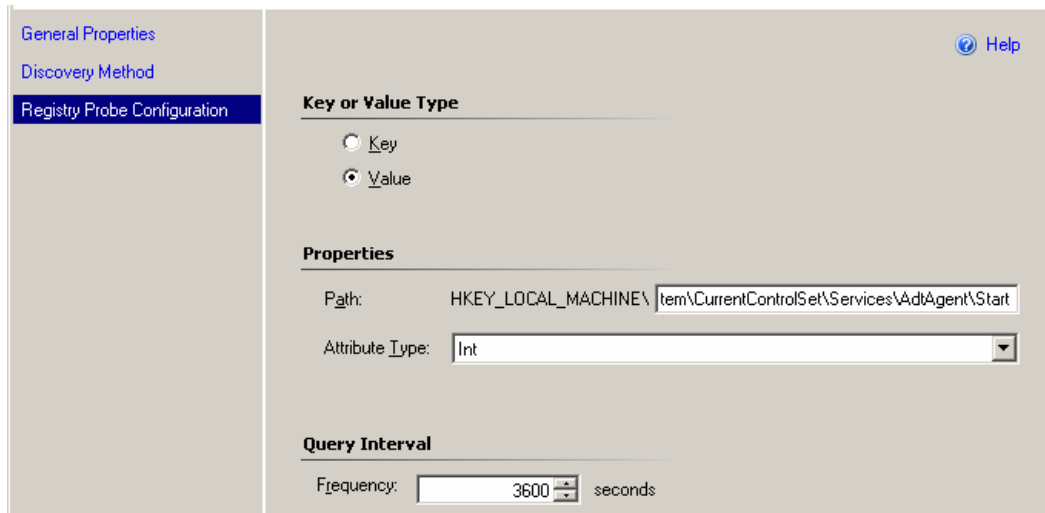
Click Next

- 1.2 In the 'Choose a Discovery Method' window enter the following:  
Discovery Type = Registry  
Target = Agent\_Extended  
Management Pack = ACS Forwarder



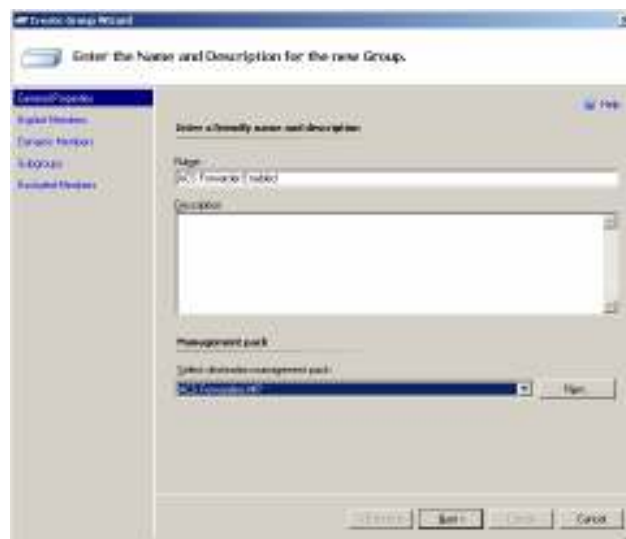
Click Next

- 1.3 On the Registry Probe Configuration window choose:  
Key or Value Type : Value  
Path : \System\CurrentControlSet\Services\AdtAgent\Start  
Attribute Type : Integer  
Frequency : 3600 (this can be increased in 'stable' environments)



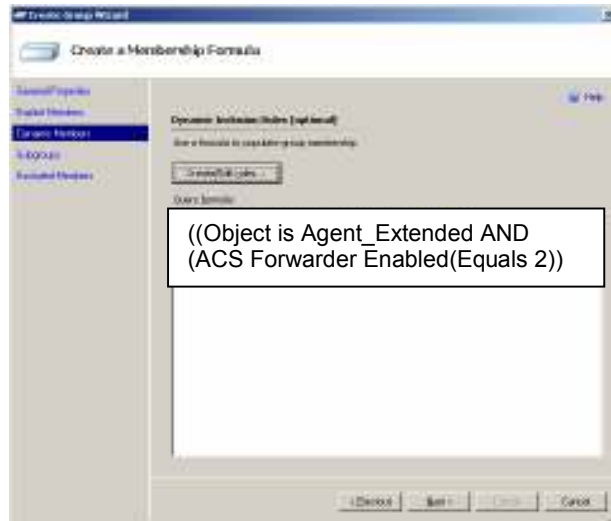
2. Create a Group based of dynamic members based upon the attribute ACS Forwarder Enabled =2.

- 2.1 Give the Group a Name and select a Management Pack – I've done this in an ACS Management Pack. Click Next



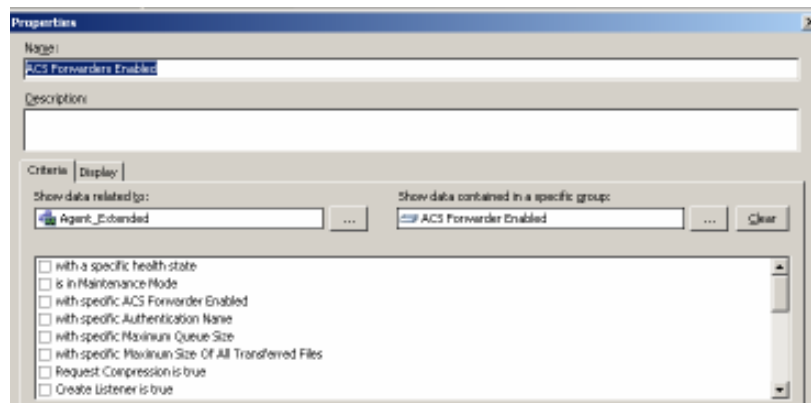
2.2 Don't choose Any Explicit Members. Click Next

2.3 For dynamic members, choose Create \ Edit Rules and make the rule:  
((Object is Agent\_Extended AND (ACS Forwarder Enabled(Equals 2)))



2.4 Create a State View ACS Forwarders Enabled (in my case in the ACS Forwarders Management Pack).

Show data related to: Agent\_Extended  
Show data contained in a specific group : ACS Forwarder Enabled



If you also want a state view of ACS Forwarders that are disabled then you can create a group with dynamic members and change the formula to:

((Object is Agent\_Extended AND (ACS Forwarder Enabled(Equals 4)))

Then create a state view based on this group.